

Tuba

SINFONIA

Durata circa 6'27"
Grado 5.0

Amilcare Ponchielli (1834-1886) Op. 106
Versione per banda sinfonica di Emiliano Gusperti

Andante un poco mosso (♩ = 70)

10

ff

3

5-7

Fig. 2

p

16

pp

f

pp

26

6

17-22

Allegro vivo (♩ = 132)

ff

1

32

deciso assai

Cl. B.

p

f

39

7

42-48

mf cresc.

51

ff

56

pp

61

6

65-70

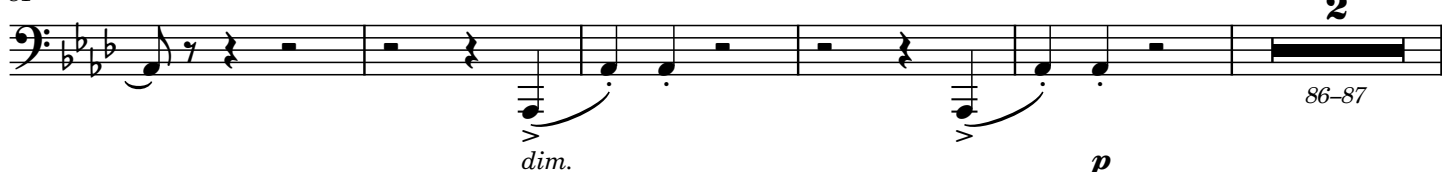
71



76



81



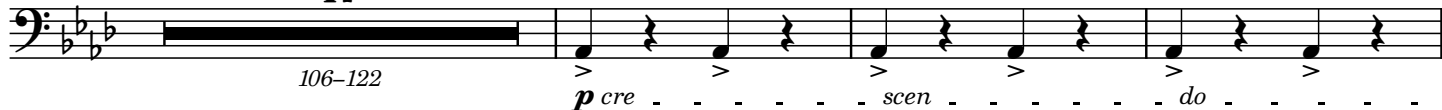
88



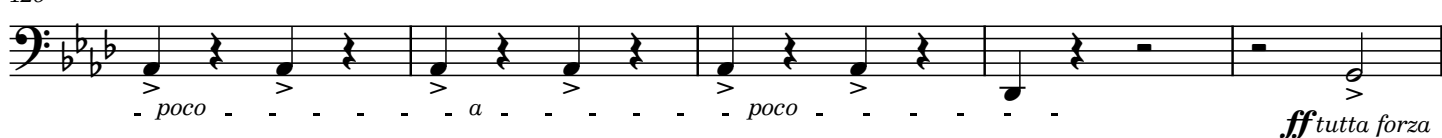
101



17



126



131



136



141



149



156



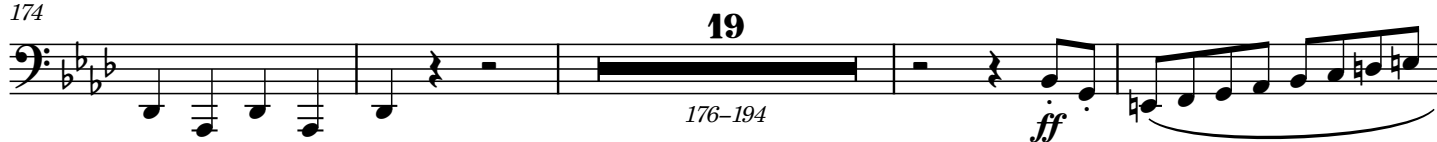
162



168



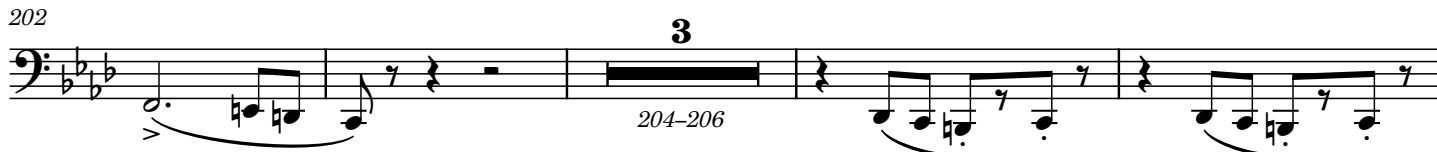
174



197



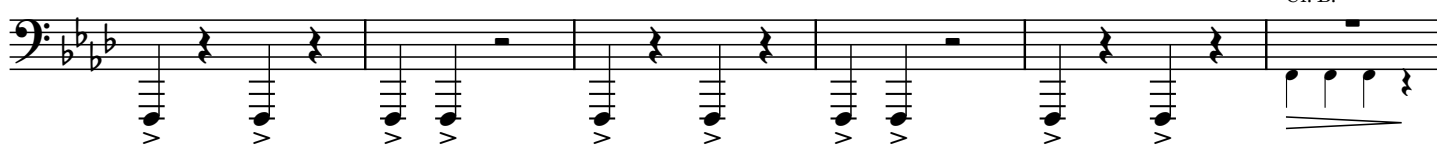
202



209



214



220



Cl. B.

226

11

228-238

p cre

241

scen *do* *poco*

247

3

a *poco* *f*

252-254

Maggiore

16

255-270

p poco cresc.

275

17

276-292

p cre *scen* *do*

296

poco *a* *poco* *ff*

302

308

313

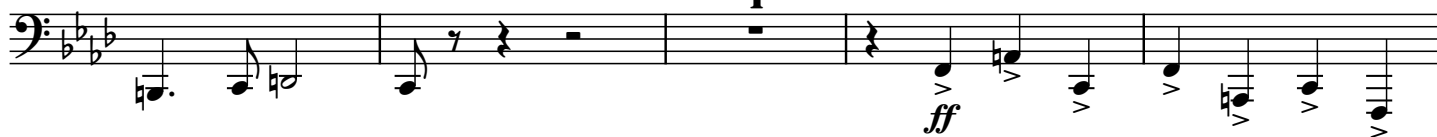
7

316-322

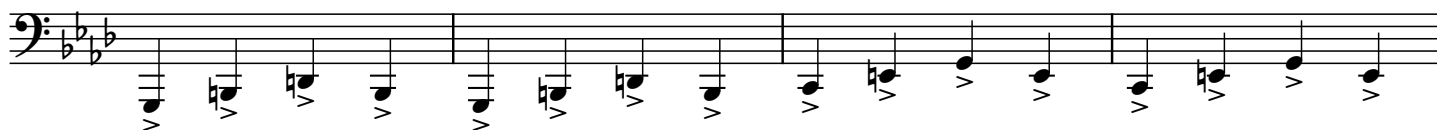
323



328



333



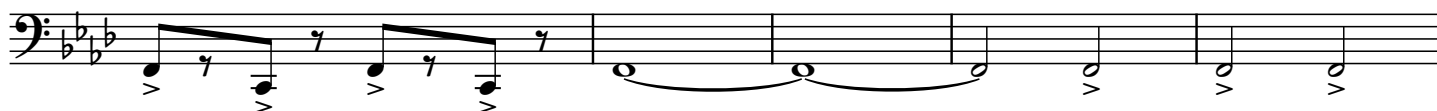
337



341



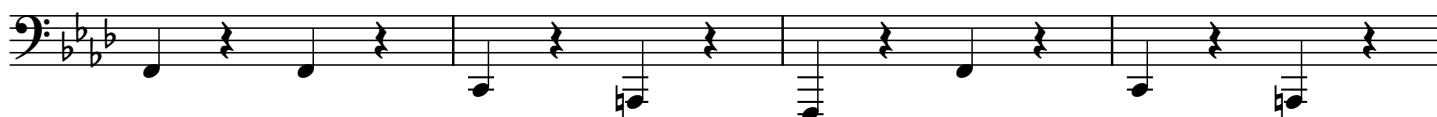
344



349



353



357

